






CH2/NW CH SEATING COLLECTION

Furniture



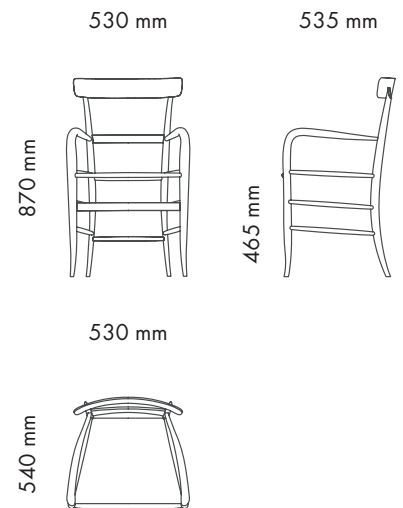
PRODUCT CODE **CH2/NW/PC** OR **CH2/NW/WP**

AVAILABLE FINISHINGS

-  Natural beech wood
-  **CH2/NW/PC** Paper cord
-  **CH2/NW/WP** Polyester colour collection

| | |
|------------------------------|-----------------------------------------------------------------|
| Model | Dining Armchair |
| Environment | Indoor |
| Materials | Natural beech structure and woven paper or polyester cord seat. |
| Customisable finishes | Polyester cord colour combination. |
| Technical description | Handmade Chiavari dining armchair with woven seat. |
| Dimensions | W 53 cm - D 53,5 cm - H 87 cm - SH 46,5 - AH 65,5 |
| Weight | Weight: 3,9 kg |

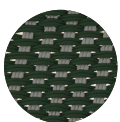
OVERALL DIMENSIONS



DESCRIPTION

Collection of handmade Chiavari chairs, inspired by the archetypical chair, light and resilient at the same time.

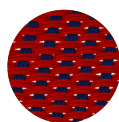
AVAILABLE POLYESTER CORD COLOUR COMBINATIONS



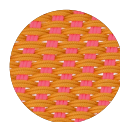
CH2/NW/WP1



CH2/NW/WP2



CH2/NW/WP3



CH2/NW/WP4

AVAILABLE MATERIALS

Due to the nature of the product, all fabrics and finishes can be customised.
For enquiries: info@manusfactor.com

Due to the handcrafted nature of the product, small variations in colours, size and shape can occur.

Exclusively distributed by
www.manusfactor.com
info@manusfactor.com